



# Peartree Hill Solar Farm

## Environmental Statement

### Volume 3

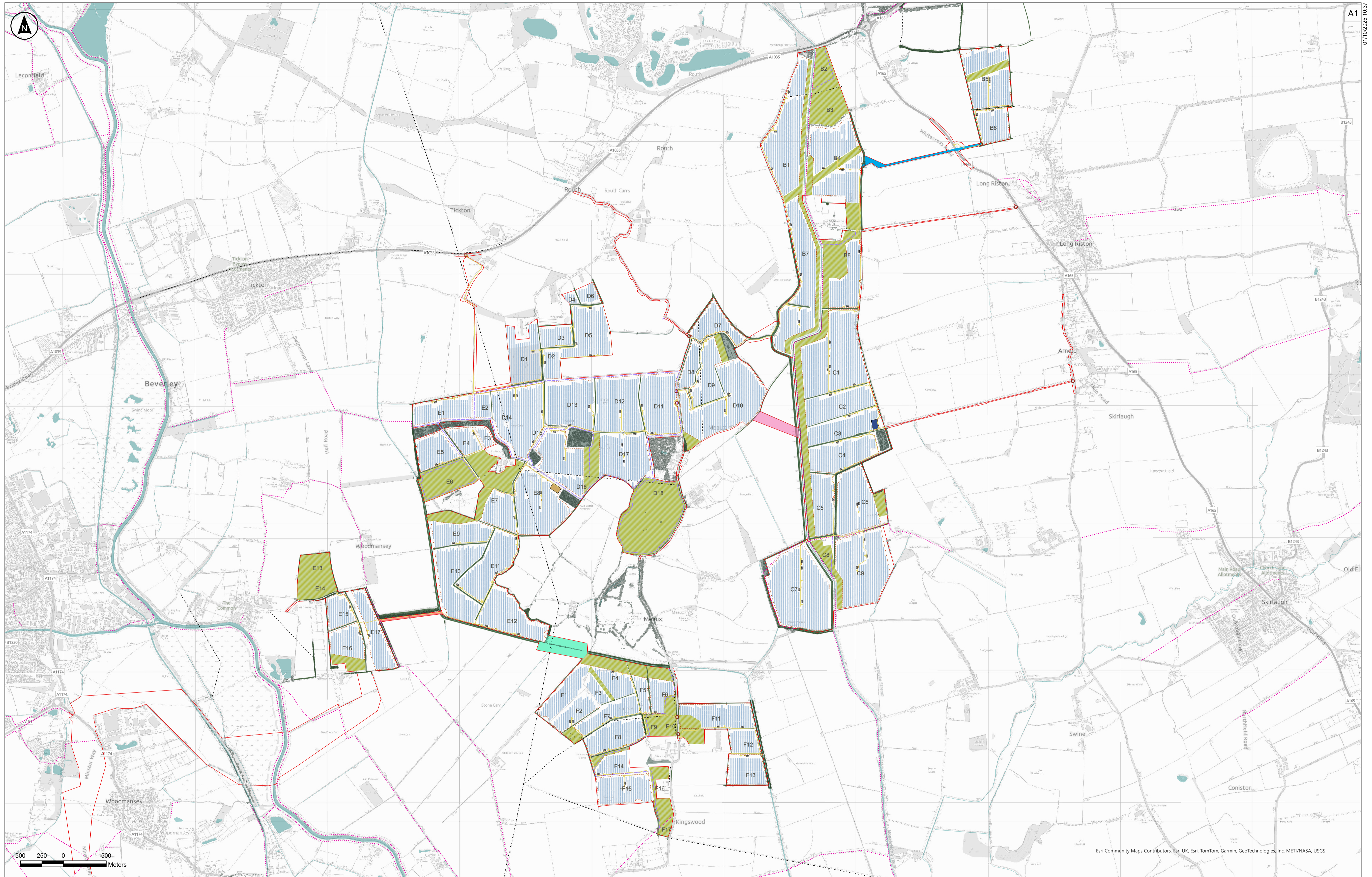
### Figure 3.1: Indicative Operational Layout Plan

### Revision 3

Application Document Ref: EN010157/APP/6.3  
October 2025

Planning Act 2008  
Infrastructure Planning  
(Applications: Prescribed Forms  
and Procedure) Regulations 2009 –  
Regulation 5(2)(a)





Esri Community Maps Contributors, Esri UK, Esri, TomTom, Garmin, GeoTechnologies, Inc, METI/NASA, USGS

Key	
	Order Limits
	Existing Features
	Public Rights of Way
	Powerlines and Pylons
	Hedgerows
	Woodlands/Trees
	Waterbodies and Watercourses
	Operational Access Points
	On-Site Substation East
	On-Site Substation West
	Hybrid Pack (Inverters, Converters and ESS Units)
	Spares Containers
	Switch Gear
	Internal Access Tracks
	Permissive Paths
	Fencing
	Indicative Areas for Mitigation, Enhancement and/or Retained Agricultural Land
	Field Reference
	Solar PV Module
	Interconnecting Cabling Corridors between Land Areas
	Cable C-D
	Cable B-B
	Cable E-E
	Cable F-F

**Notes:**

1. This drawing is for illustrative purposes only
2. The location of features shown are indicative only to show the key features of Peartree Hill Solar Farm for which development consent is sought
3. The Indicative layout demonstrates one way that the Proposed Development could be undertaken within the parameters of the DCO [EN010157/APP/5.8], consent is not sought specifically for this layout.
4. Underground features (such as cables), joining bays, and boundary treatments (such as perimeter fencing and CCTV) are not shown.

Rev	Date	By	Chkd	Appd	Authd
P04	30/09/2025	NAM	EH	AD	MG



Client  
 Project Name  
**Peartree Hill Solar Farm**

Drawing Title  
**Environmental Statement Volume 3, Figure 3.1: Indicative Operational Layout Plan**

Scale at A1 1:13,000	Coordinate System British National Grid
Status DCO Application	
Infrastructure Planning (Applications: Prescribed Forms and Procedure) Regulations 2009: S2(4a)	
PNS Number EN010157/APP/6/3	Rev PD4

Esri UK, Esri, TomTom, Garmin, FAO, METI/NASA, USGS

The Base mapping is based upon Ordnance Survey (OS) data. Reproduced by permission of Ordnance Survey on behalf of HMSO. © Crown copyright and database rights 2025. Ordnance Survey AC0000808122